

Institution of Civil Engineers Republic of Ireland Graduate & Student Committee and Young Engineers Society present the lecture:

“INTEGRATION OF BIM AND SURVEYING”

Date: Monday 25th April 2016

Time: 18:30

Location: Lecture Theatre

Speakers:

Alan Halpin B.Eng Civil Eng, BIM manager (Ireland)

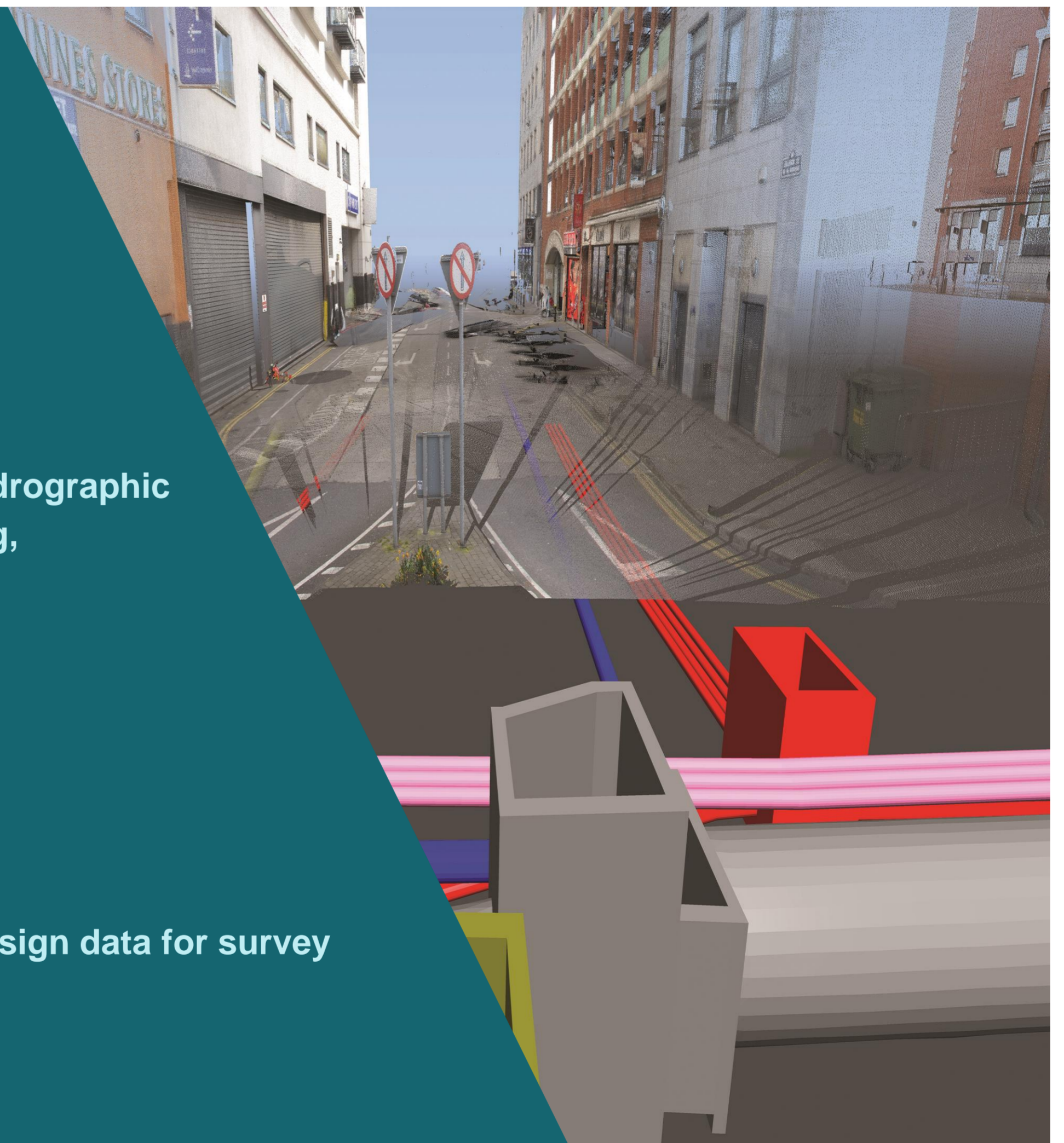
has been involved with BIM for over 6 years, covering small to large scale design and surveying projects, while spanning various countries and disciplines in Australia, UK and Ireland.

**Michael Durnin Msc Eng Surveying & Geodesy,
Dip Geo Surv. Chief Surveyor, Luas Cross City**

has extensive experience in executing and managing large survey, hydrographic and infrastructure projects, specialising in tunnel, light rail, monitoring, geodetic networks and implementing lean efficient workflows.

Seminar Overview:

- How information should be requested: BIM Survey Specifications
- What information can be gathered;
- How it can be used in BIM environments;
- When we can use such information,
- BIM to Field solutions, what to be conscious of when preparing design data for survey



Venue:

Engineers Ireland, Clyde Road, Republic of Ireland

No registration required

For further information please contact:

Alpha Barry: Alpha.Barry@arup.com