

Conseil International des Grands Réseaux Electrique

The International Council On Large
Electric Systems

CIGRÉ

- What is CIGRÉ
 - Goals
 - Uniqueness
- Organization
- How CIGRÉ Works
 - Study Committee
 - Technical Committee
- Current Areas of Study
- Benefits of Participation

What is CIGRÉ

Founded in Paris in 1921 as a worldwide non-profit association. Concept of J. Tribot Laspiere (France) and Frederic Attwood (USA).



CIGRÉ addresses issues related to the development, operation and management of electric power systems as well as environmental impact, design, construction, maintenance and disposal of equipment and plants.

Goals of CIGRÉ

- To facilitate and develop the exchange of power system related engineering knowledge and information; to develop knowledge and distribute it.
- To add value by sharing ideas and information, synthesizing state-of-the-art and world practices.
- To produce and deliver high-quality technical information in support of society's needs.



Why CIGRÉ is Unique

- CIGRÉ is focused on practical, technical applications
- Collaborative work and added value is facilitated by Study Committees and Working Groups of the world's foremost experts
- CIGRÉ's reputation is based on sustained objectivity – unbiased information
- CIGRÉ is the only true worldwide organization of its kind > 80 countries
- CIGRÉ does not promulgate standards, therefore eliminating conflict with commercial interests



Why CIGRÉ is Unique



Truly global view of power engineering



Scope directed at power delivery systems



Industry-focused



Based on collaboration with utilities, suppliers, academia and policy makers

CIGRÉ Organization 2010

- CIGRÉ Officers
 - President – André Merlin (FR)
 - Treasurer – Paulo Esmeraldo (BR)
 - Technical Comm. Chair – Klaus Fröhlich (CH)
 - Secretary General – François Meslier (FR)



Merlin



Esmeraldo

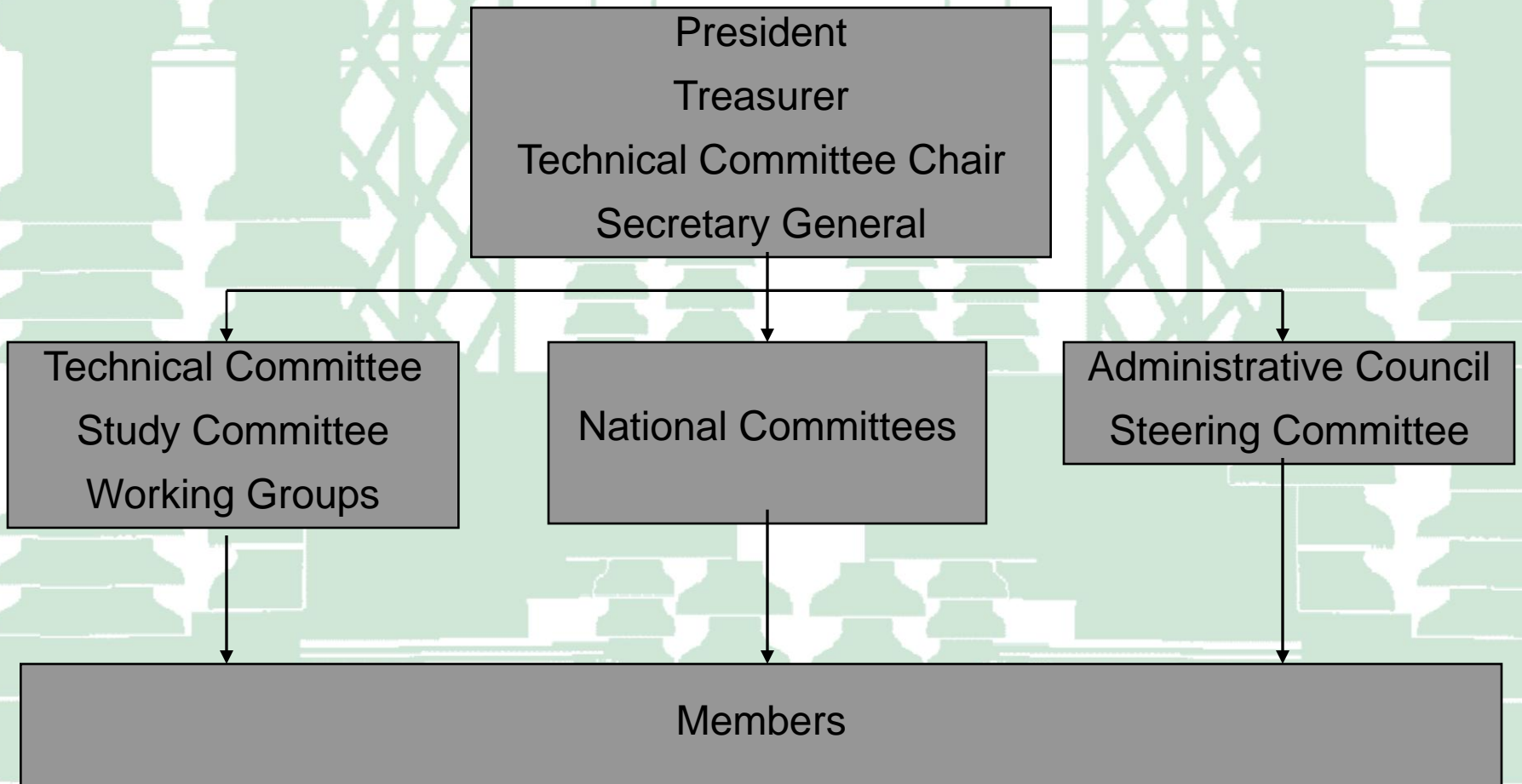


Fröhlich



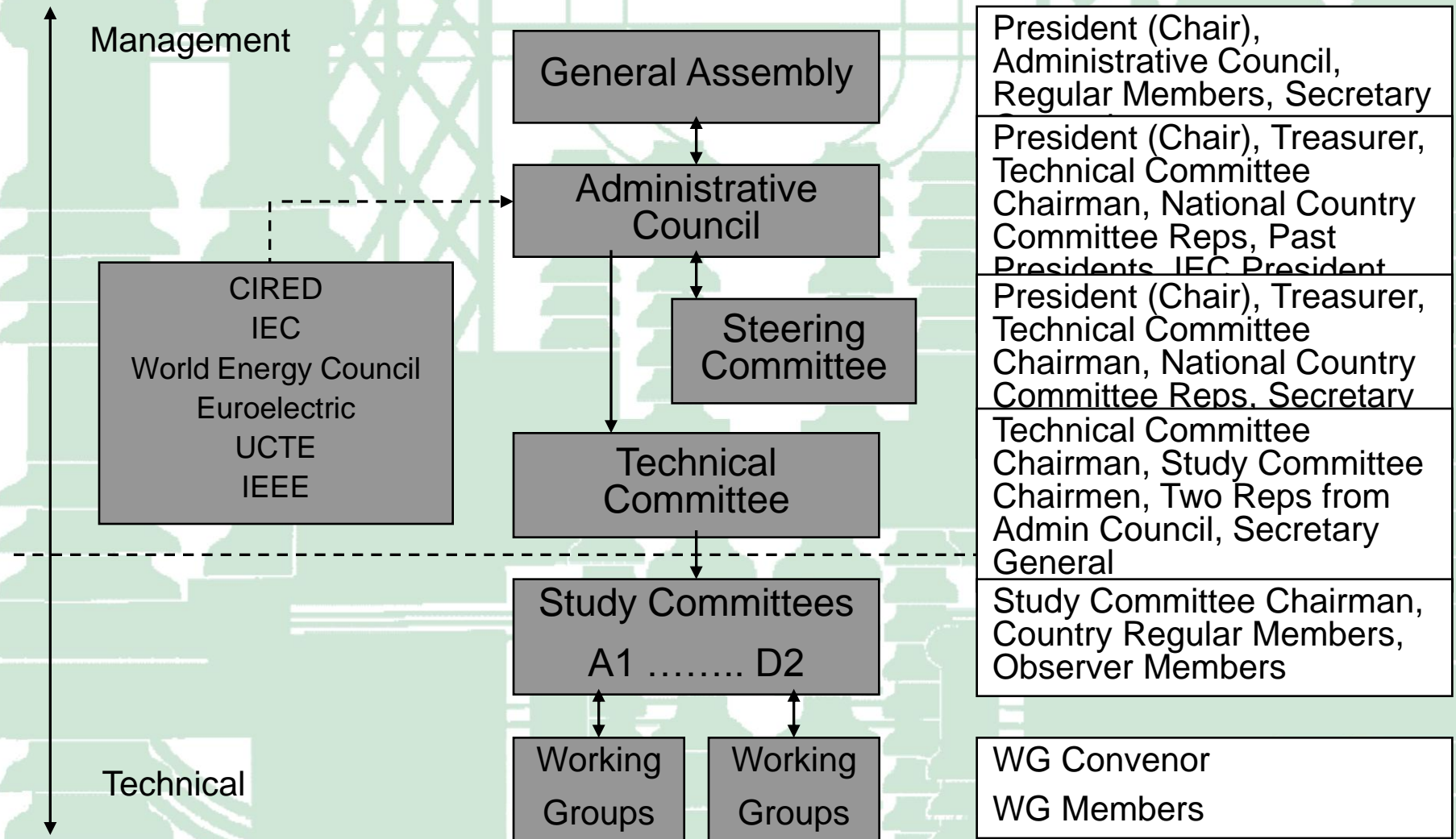
Meslier

CIGRÉ Organization





CIGRÉ Organization

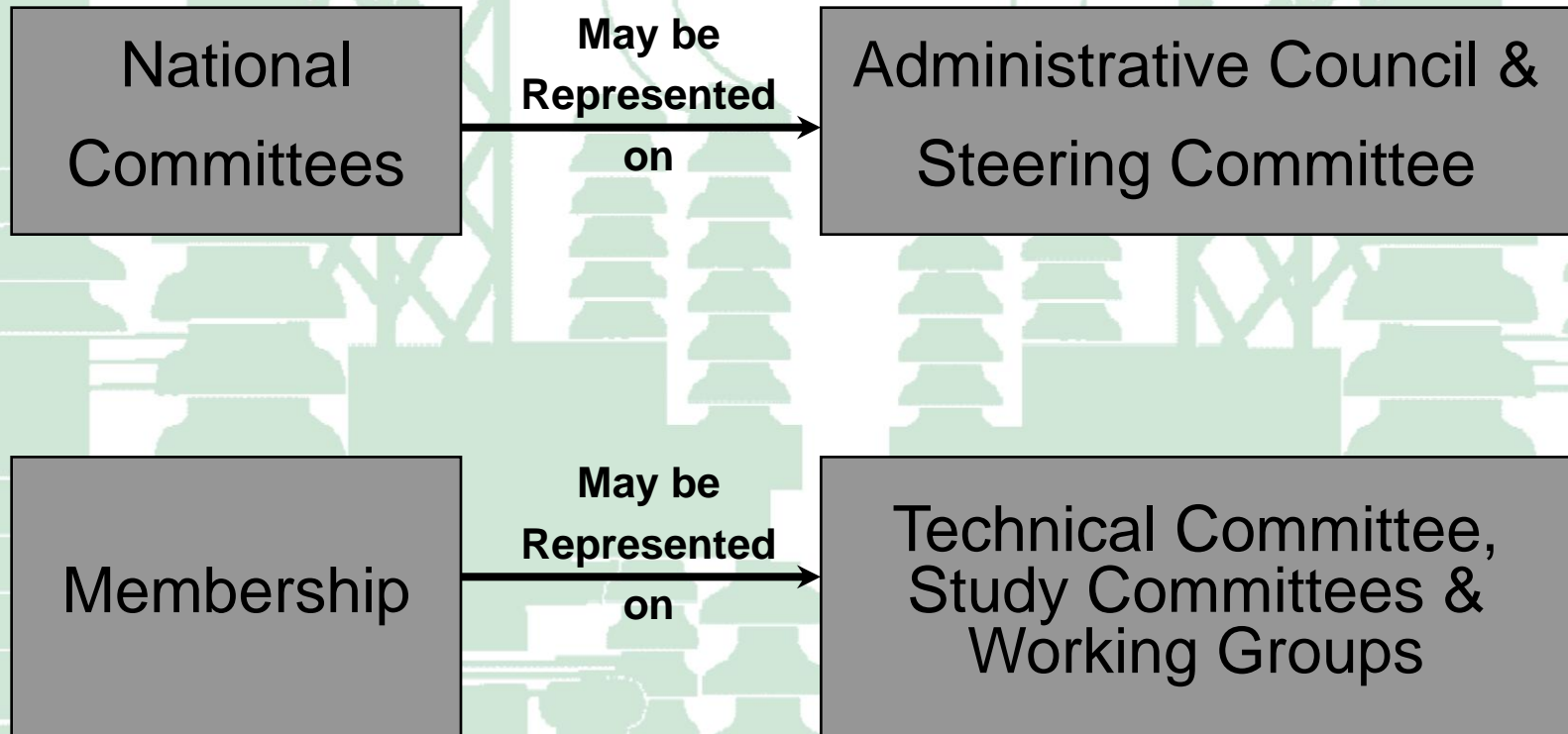


National Committees

- Represent CIGRÉ in their country
- Organize events to promote CIGRÉ
- Nominate Study Committee and Working Group Representatives
- Leverage the network of Study Committees within countries
- Facilitate country submission of papers to CIGRÉ's Technical Committee



CIGRÉ Organization





Irish CIGRÉ Organization

Irish National
Committee

Operation governed by Constitution
6 – 12 members
Chairman
Secretary
IEI Rep, IET Rep

Technical
Committee

Membership too small to support a technical
committee

Regular
Members

Represented on 13 Study Committees
Represented on 60 Working Groups

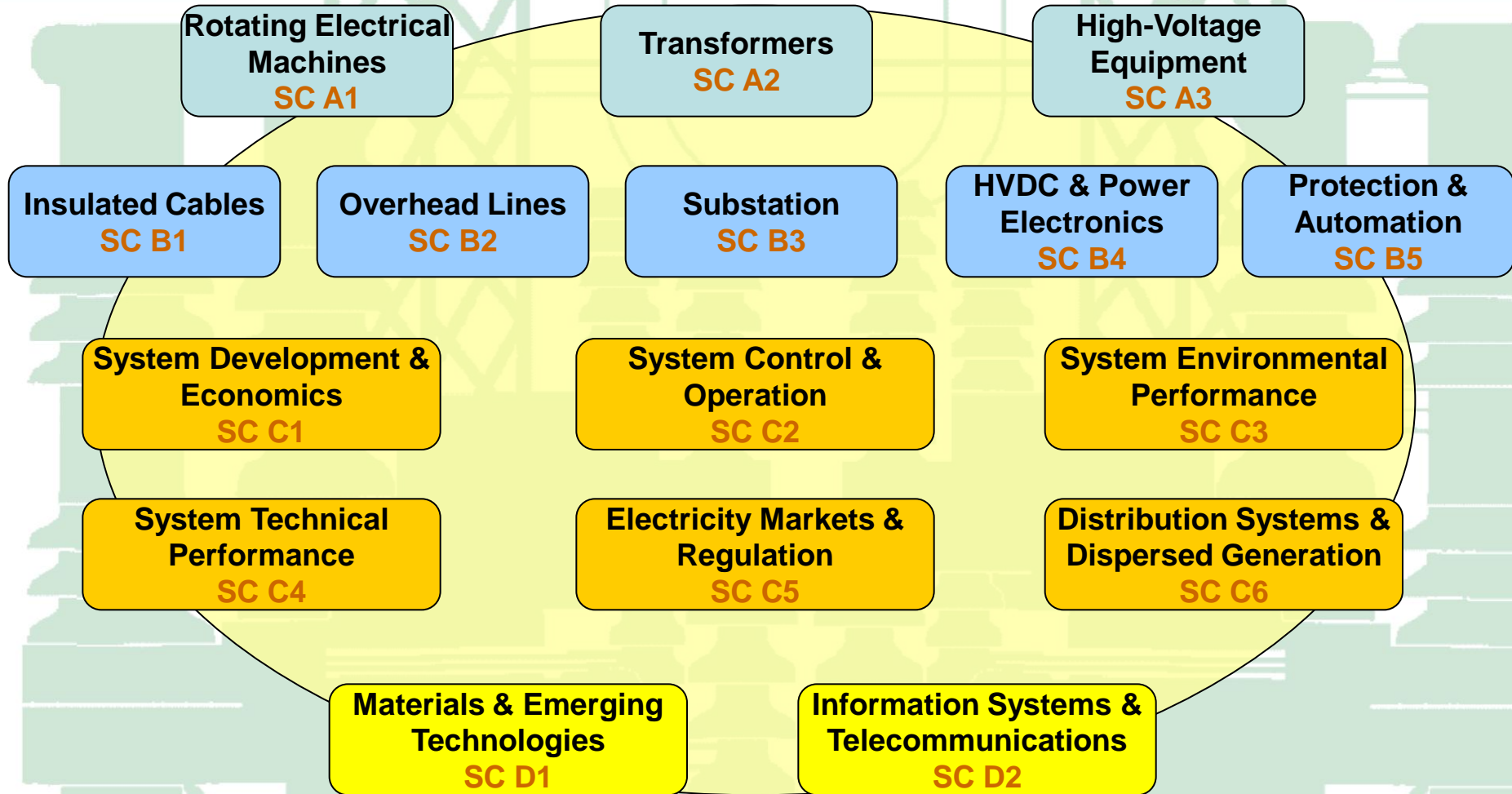
Biennial General
Meeting

Held in odd years to elect national committee

Study Committees

- Representative represent their country in CIGRÉ technical activities
- Representative liaison with National Committees
- Organize studies in their field
- Create and disband Working Group's as needed (~180 Working Groups)
- Coordination by CIGRÉ Technical Committee
- Conduct efforts based on strategic/action plans
- Work products include reports, technical brochures and tutorials

CIGRÉ Study Committees



A Worldwide Audience

11,000 Members in **89** Countries

57 National Committees

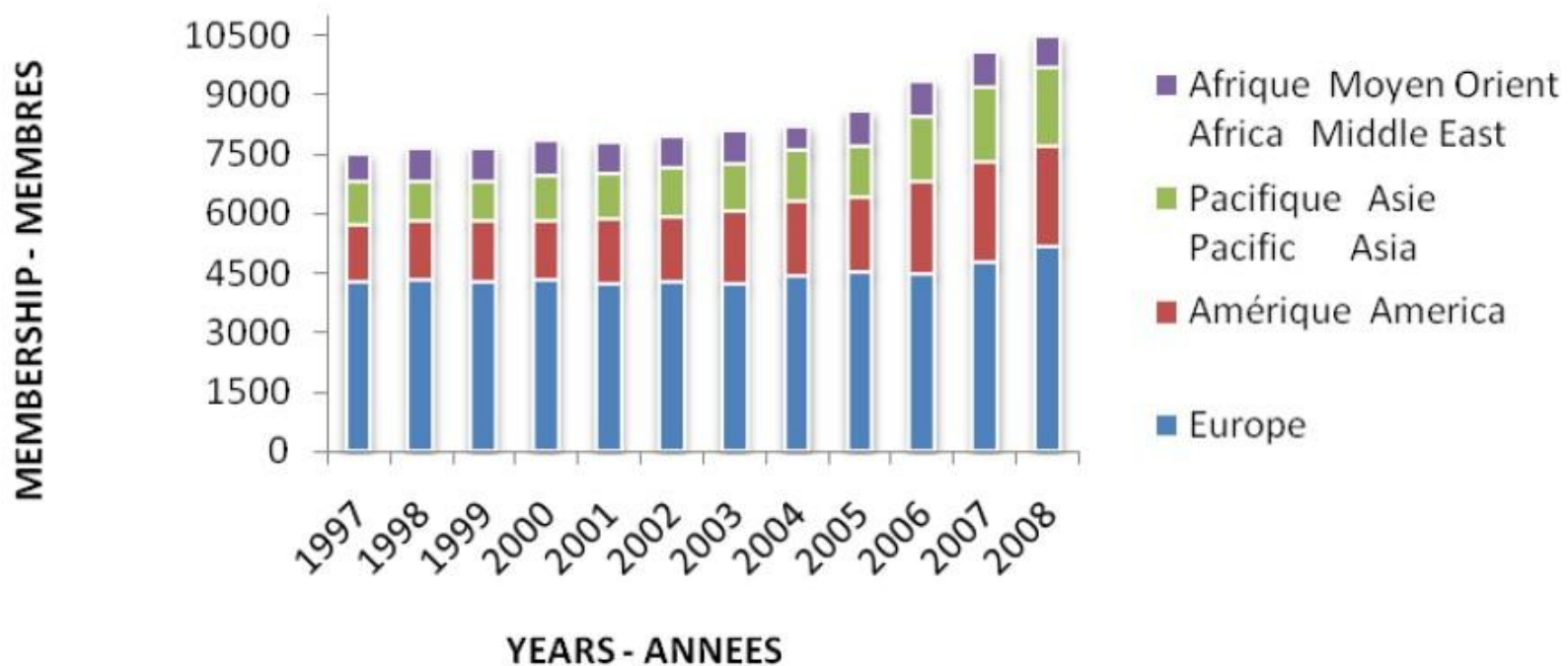


A Worldwide Audience

11,000 Members in **89** Countries

57 National Committees

MEMBRES - MEMBERSHIP * 1997-2008*



How CIGRÉ Functions

- Conferences
 - Biennial Session in Paris (even years) (>3,000 delegates)
 - Symposium, one or more each year (200 – 400 delegates)
 - National and regional meetings and colloquium on targeted subject
- Study Committees and Working Groups
 - Permanent structure whose scope covers all issues concerning power systems
- Dissemination
 - Conferences
 - Web presence with expansive technical library (e-cigré)
 - Publication, tutorials and workshops





Disseminating Information

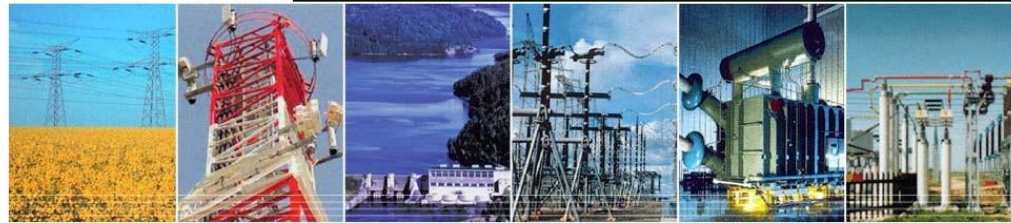
- Major web presence
 - CIGRÉ's on-line technical library
- Decades of history, reports of Study Committees, papers, summaries of technical activities
- Working Group reports
- Technical brochures
- CIGRÉ journal, ELECTRA, reports on CIGRÉ's technical activities and critical industry issues
- 30 years of Electra available on CDROM



INTERNATIONAL COUNCIL
ON LARGE ELECTRIC SYSTEMS

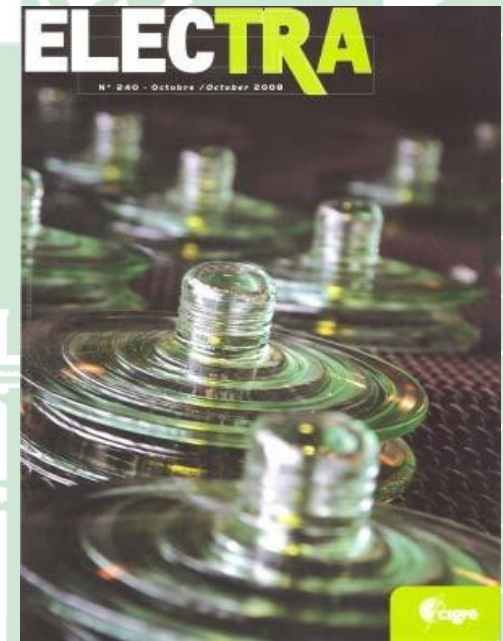


[What is CIGRE?](#) > [Technical Activities](#) > [Events](#) > [Publications](#) > [Member Section](#) > [Links](#)



[Site Map](#) > [Search](#) > [Contact](#) > [Newly updated](#)

This site is best viewed at 1024x768 screen resolution with IE 7.0 or later and FireFox 2.0 or later.



Strategic Directions CIGRÉ

- Technical Direction 1: The Electrical Power System of the Future
 - New intelligent grid concepts for integration of intermittent dispersed resources
 - Need for bulk power transmission HVDC and/or UHV for
 - Implementation of central station and storage
 - Strengthen the power grid (UHV, DC) – overlay network
 - Offshore networks
 - More intelligence for system operation and control

Strategic Directions CIGRÉ

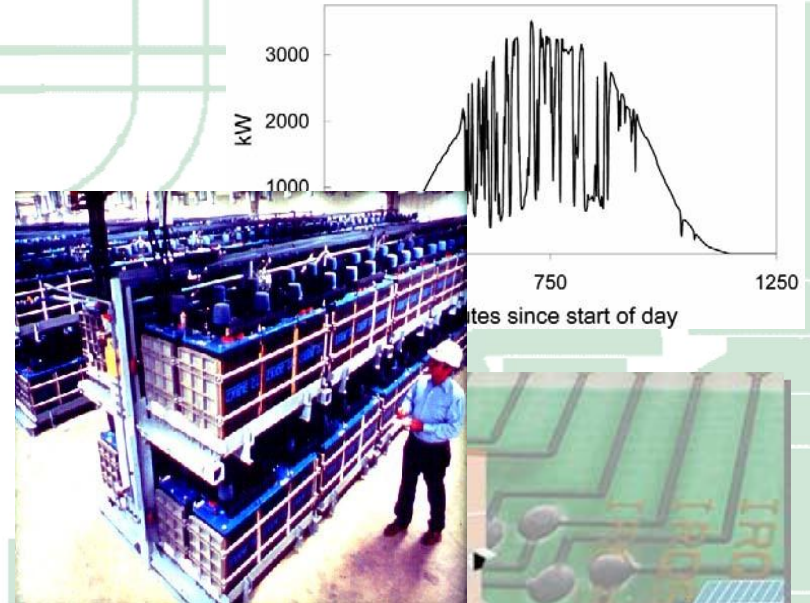
- Technical Direction 2: – Make the best use of existing assets
 - Asset management and efficient use of assets
 - Improve system operation and control for better stability and recovery (demand side management, congestion management)
 - Better use of existing right-of-ways
- Technical Direction 3: – Focus on environment and sustainability
 - Overall system efficiency
 - Impact of severe climate conditions
 - Security of the system

Strategic Directions CIGRÉ

- Technical Direction 4: Interactive communication with the public and with political decision makers
 - Act as an unbiased source of information
 - Provide scientific/technical information to aid current debates

Benefits of Participation

- Ability to raise personal development through knowledge transfer
- Access to international best practice and benchmarking
- Access to a global resource of expertise
- An opportunity to make the international industry aware of your existence and promote your business





Why do Employers Encourage Staff to Join?

- By getting involved in CIGRE
 - Engineers will be more effective and reach their potential more quickly
 - Develop personal network
- Support will be required to
 - Provide time, but an engineer's time will be split between the company's and the individual's
 - Financial support (travel, etc)
 - Provide company information as part of input to technical work





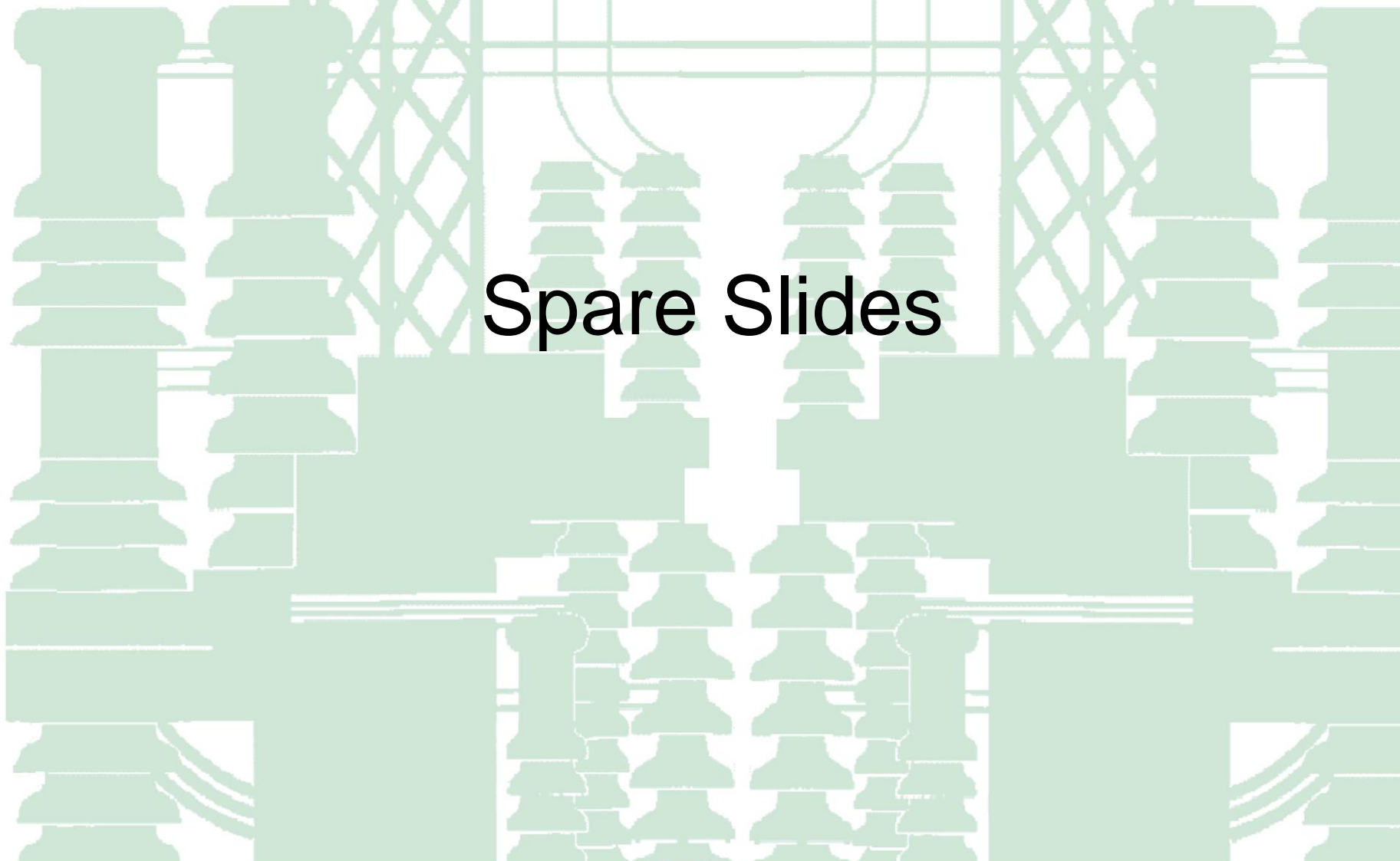
CIGRÉ

Thank You
and

Any Questions?

CIGRÉ

Spare Slides



Technical Committee Study Committees

CIGRÉ
Technical
Committee (TC)

Members nominated by National
Committees

Study
committees

Manage studies in their field of
interest

Working Groups

Working Groups are operational
arm