

Birr International STEAM Festival, 16th to 18th October 2025

Welcome Pack:

1. This series of maps on how to get to Birr, where to park in the town, and the various points of interest and locations where attendees will visit in the course of the festival.
2. For accommodation options, please refer to Engineers Ireland webpage [here](#) with contact details for hotels.
3. Menu for Doolys Hotel on Friday and Saturday nights, only applicable if you have opted for that when registering. No need to select option in advance of meal. Please indicate preferred dietary options ie vegan, gluten free, allergies when registering.
4. Attendees are required to check-in at the Birr Theatre and Arts Centre in advance of their attendance where wrist-bands will be issued. Please wear for attendance at all events.
5. For tours of Birr Castle and Gardens (and telescopes) please refer to the following [link](#) to make a reservation.

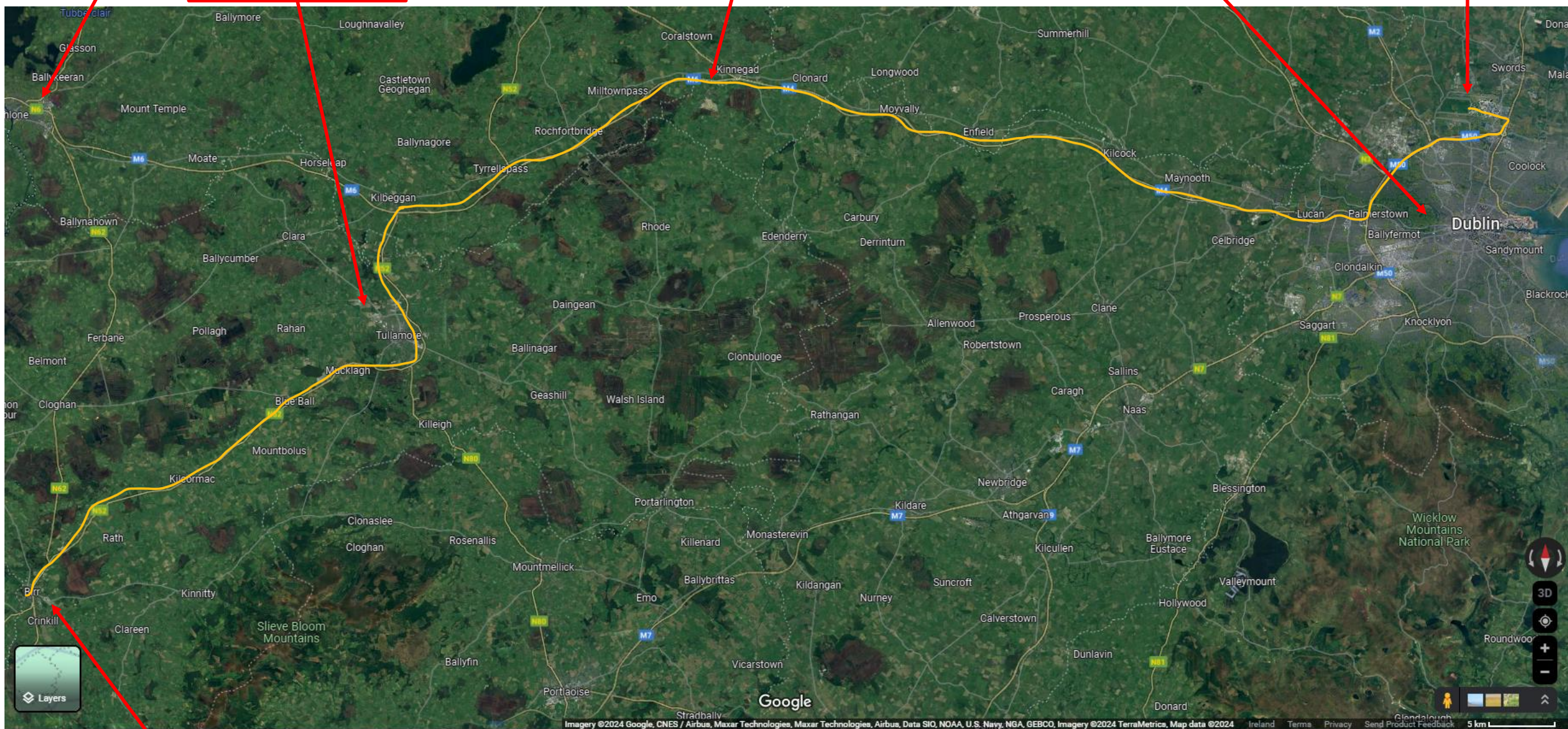
Athlone

Tullamore and
train station

Take the M4 from Dublin to Kinnegad and turn off for
ringroad around Tullamore and on to Birr –1 hour 45mins

Heuston Station

Dublin Airport



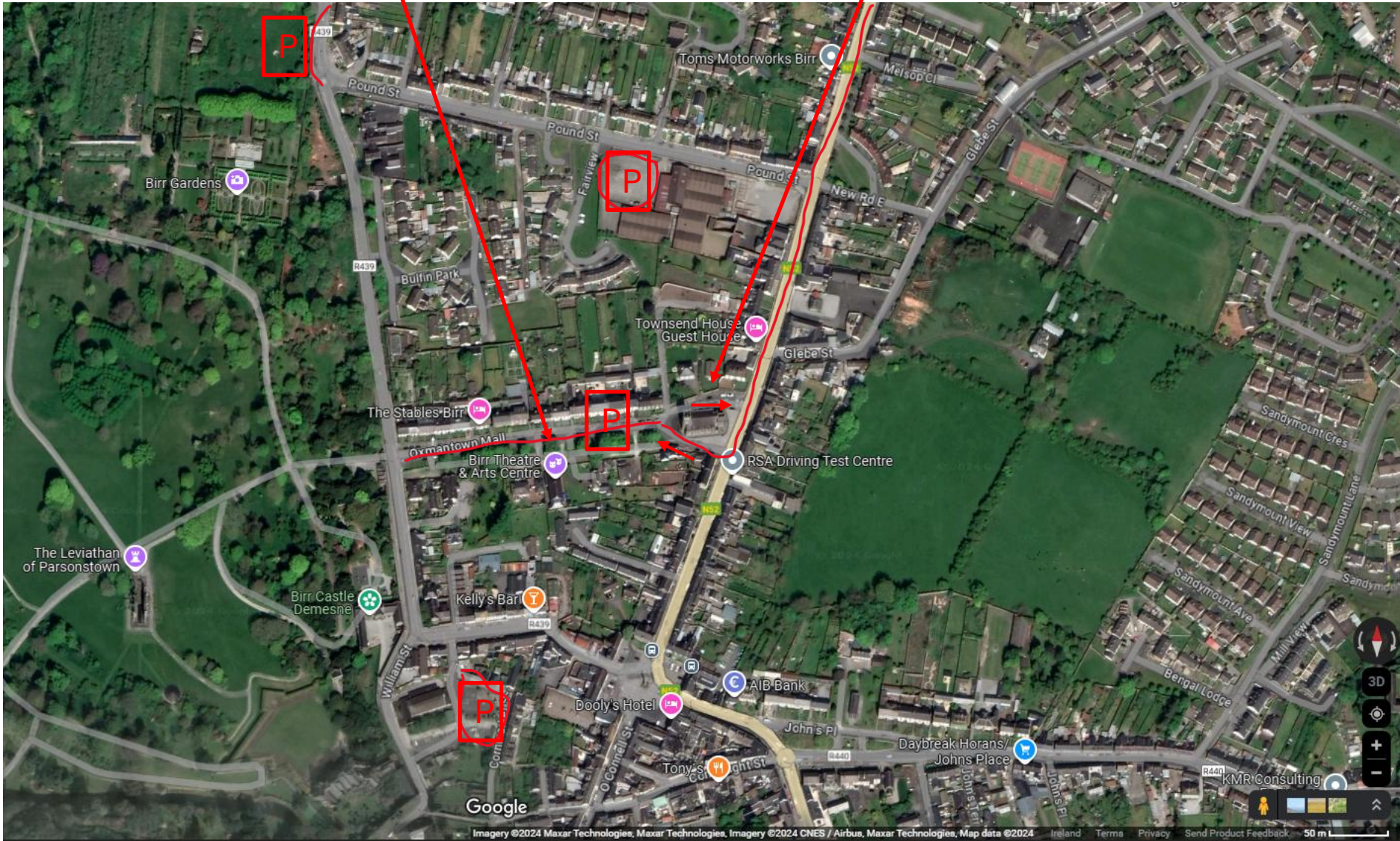
Birr





Birr Theatre and Arts Centre

One-way around church





County Arms Hotel

